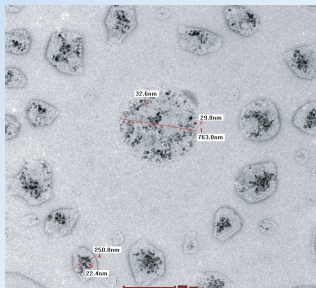


AMARA

NANO SUPPLEMENT



Product Specification

Brand : **QUANTUM FUSION**

Product Name : **AMARA**

Particles Size : **<22.4 nm**

Formula : **Nano Au, Mg, Fe, and Zn**

Storage Temperature : **20 to 30°C**

TEM Image of AMARA

Stability and Reactivity

The product is chemically stable under standard ambient conditions (room temperature).

Non reactive under normal conditions of use and storage (room temperature).

MINERAL

S. No.	Parameters	Units	Methods	Results of Analysis
1	Calcium	mg/100g	SOP-CHM-27-01	71.14
2	Iron	mg/100g	SOP-CHM-27-01	1.21
3	Magnesium	mg/100g	SOP-CHM-27-01	7.35
4	Potassium	mg/100g	SOP-CHM-27-01	34.59
5	Zinc	mg/100g	SOP-CHM-27-01	0.535
6	Gold	mg / kg	By ICP-OES	40.22



📍 62 UBI ROAD 1, #11-08 OXLEY, BIZHUB 2, SINGAPORE - 408 734.

✉ support@quantumfusion.space

🌐 www.quantumfusion.space

NUTRITIONAL DETAILS

S. No.	Parameters	Units	Methods	Results of Analysis	RDA Value*	%RDA
1	Energy	Kcal/100g	SOP-CHM-29-00	272.36	2000	13.62%
2	Total Carbohydrate	g/100g	SOP-CHM-28-00	0.72	-	-
3	Protein	g/100g	SOP-CHM-137-00	3.56	-	-
4	Total Fat	g/100g	By FSSAI Manual For Beverages, Sugar & Confectionery (A8) 2015	28.36	67	-
5	Total Sugar	g/100g	SOP-CHM-123-00	BLQ	-	-
6	Added Sugar	g/100g	SOP-CHM-139-00	BLQ	50	-
7	Trans Fat	g/100g	AOAC996.0622nd Ed.	BLQ	2	-
8	Saturated Fat	g/100g	AOAC996.0622nd Ed.	BLQ	22	-
9	Cholesterol	mg/100g	AOAC994.10 22nd Ed.	BLQ	-	-
10	Sodium	mg/100g	SOP-CHM-27-01A	5.21	2000	0.26%

*Percentage contribution to Recommended Dietary

Allowance calculated on basis of 2000kcal energy 1 Serve = 100g

BLQ - Below Limit of Quantification

LOQ (Limit of Quantification) for Total Carbohydrate = 0.01g/100g, Protein = 0.01g/100g,

Total Sugar = 2.0g/100g, Added Sugar = 1.0g/100g, Trans Fat = 0.1g/ 100g, Cholesterol = 1.0mg/100g

PHYSICAL AND CHEMICAL PROPERTIES

	Physical State	Semi Liquid
2	Color	Dark brown
3	Odor	Smoky Smell
4	pH	6.11
5	Moisture	44.41
6	Explosive properties	Not classified as explosive
7	Oxidizing properties	None
8	Flammability (solid, gas)	None
9	Upper / lower flammability or explosive limits	None
10	Water solubility	5%
11	Shelf Life	6 months

VITAMINS

S. No.	Parameters	Units	Methods	Results of Analysis
1	Vitamin C	mg/100g	IS5838: 1970 Reaff2020	149.46
2	Vitamin D	µg/100g	By HPLC	BLQ
3	Vitamin E	mg/100g	By HPLC	BLQ
4	Vitamin B1	mg/100g	By HPLC	4.41
5	Vitamin B2	mg/100g	By HPLC	2.29
6	Vitamin B3	mg/100g	By HPLC	116.03
7	Vitamin B5	mg/100g	By HPLC	34.84
8	Vitamin B6	mg/100g	By HPLC	126.14
9	Vitamin B7	mcg/100g	By HPLC	321.41
10	Vitamin B9	mcg/100g	By HPLC	643.62
11	Vitamin B12	mcg/100g	By HPLC	33.24
12	Vitamin A (as Beta-Carotene)	mg/kg	By HPLC	0.542
13	Vitamin K	mg/kg	By HPLC	BLQ